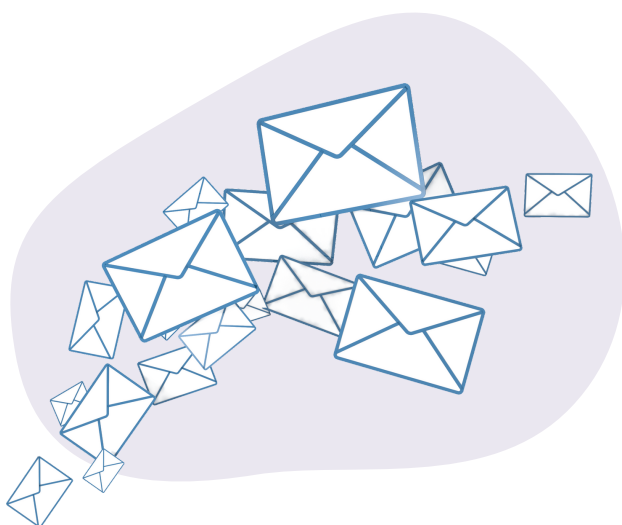


HOW TO SHARE MY FAMILY COACH WITH YOUR FAMILIES

1

Send an email

Send out our email and video to explain what our new service has to offer - and that's it's free to register.



2

Use social media

Use our suggested social media captions and video to reach your school community online.



3

Add us to your website

Use our suggested text and My Family Coach button image on your website for everyone to see.



4

Share resources

Share links to our resources matched to your RSE and PSHE lessons- we've included a handy mapping document to make it easy to find them.



5

Keep talking

Make My Family Coach a regular part of your newsletters – our content document is a great way to find the topics parents will find most useful.



**MY FAMILY
COACH**

Powered by **TEAM TEACH**